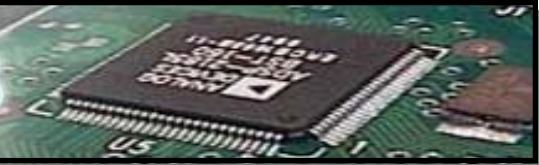
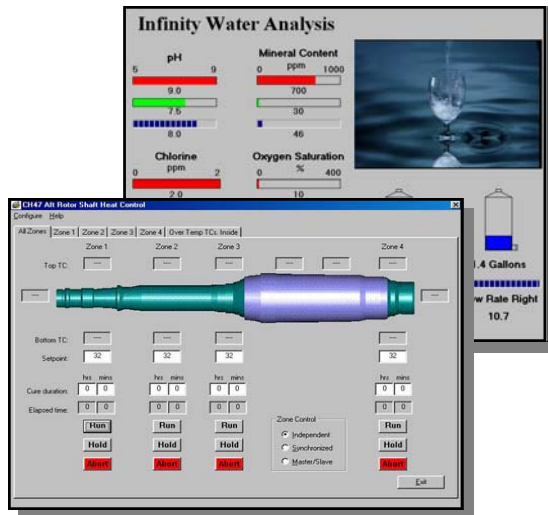


# MicroWise Solutions



## Software Solutions

- Digital Signal Processing algorithms simulation, development, and verification.
- Embedded software development. (C, C++, EC++, Linux, Assembly, WinCE)
- PC Windows software applications and Graphical User Interface development. (Visual C++, Visual Basic, Linux)
- PDA custom software applications. (Pocket PC, Win CE, and Palm)
- Web-based data collection, monitoring, and control of custom & PLC devices.
- Software testing and verification.
- Hardware-in-the-loop simulation.
- New design or modification of existing applications.



## Hardware Solutions

- Multimedia video & audio processing, and digital streaming applications.
- USB 2.0, Gigabit Ethernet, Power Over Ethernet (PoE & PoE Plus) designs.
- Industrial motion & temperature control systems.
- Digital Signal Processing applications:  
*ADSP-218X,*  
*TMS320C24XX*
- EPLD & FPGA applications.
- Embedded Microprocessor system designs:  
*Intel PXA270, PXA320, 80486, 80C188, 80C51 ;*  
*Microchip 16F8XX, 17C756A ;*  
*Texas instrument MSP430F149 ;*  
*Freescale MC9S12BD256, MC9S12NE64*



- Internet Appliance, Web based data collection, monitoring, and control.
- High precision, low noise, and wide dynamic range analog circuitry design.
- Switching power supply, Inverter, and Battery charger Design.
- Design for wide operating temperature and extreme environments.
- Design for avionics and industrial environment meeting MIL-STD-810 & DO-160 requirements.
- Design for manufacturability (DFM), and for use with Automate Test Equipment (ATE.)

## Turnkey Solutions

- We have been partnering with several local contract assembly houses for all our electronic assembly needs for more than 10 years.
- ISO9001:2000, ISO3485:2003 Medical, and SAE AS9100 Aerospace.
- State-of-the-art, multi-head automated pick-and-place machines.
- Rework station capable of handling BGA and Micro BGA.
- Fully Automated Test Equipment (ATE) ensures 100% testing of functionality.
- Fully automated environmental chambers screen out pre-mature component failures



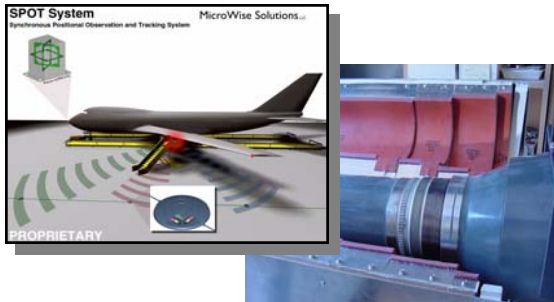
## Technical Documentation

- Schematic Capture.
- Assembly drawings/instructions.
- Functional Test Procedures.
- User and Maintenance Manuals.
- Mechanical drawings:  
*Pro Engineer, SolidWorks, & AutoCad.*

# Product Solutions

- Warehouse & factory automation and collision avoidance system.
- DSP based induction & DC motor drive.
- Multi-zone temperature controller & Composite repair system.
- Pocket PC & Palm based instrumentation & handheld parameter programmer.
- 16, 64, 128-channel process controller & thermocouple scanner.
- Intrinsically safe, all-solid-state Ground Fault Current Interrupter.
- 16-Channel Data Acquisition board, accepts current, voltage, and TC inputs.
- Ultrasonic Distance Meas. module.

*Please visit our website for a more complete listing of the products we have to offer.*



## MicroWise Solutions, LLC

13200 SE 30th Street  
Suite B  
Bellevue, WA 98005 USA

P.O. Box 376  
Kirkland, WA 98083-0376

(425) 562-3142 Office  
(425) 562-3526 Fax

[www.Micro-Wise.com](http://www.Micro-Wise.com)  
Info@Micro-Wise.com

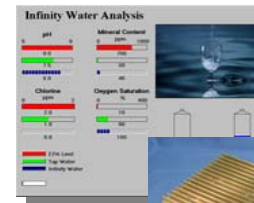
MicroWise Solutions, LLC  
P.O. Box 376  
Kirkland, WA 98083-0376



## MICROWISE SOLUTIONS, LLC

*We Provide Electronic Hardware & Software Solutions*

MicroWise Solutions specializes in providing custom hardware and software design services for industrial and OEM applications.



We also provide off-the-shelf products & turnkey manufacturing.



## Software Solutions

## Hardware Solutions

## Product Solutions

## Turnkey Manufacturing Solutions



Visit us at

[www.Micro-Wise.com](http://www.Micro-Wise.com)

then contact us about providing you with cost effective engineering & support solutions.